

Maps of Sefton's population

This annex contains maps of the total population for the following:

- 13 libraries within 2 mile radius
- 13 libraries within 3 mile radius
- 6 libraries within 2 mile radius
- 6 libraries within 3 mile radius

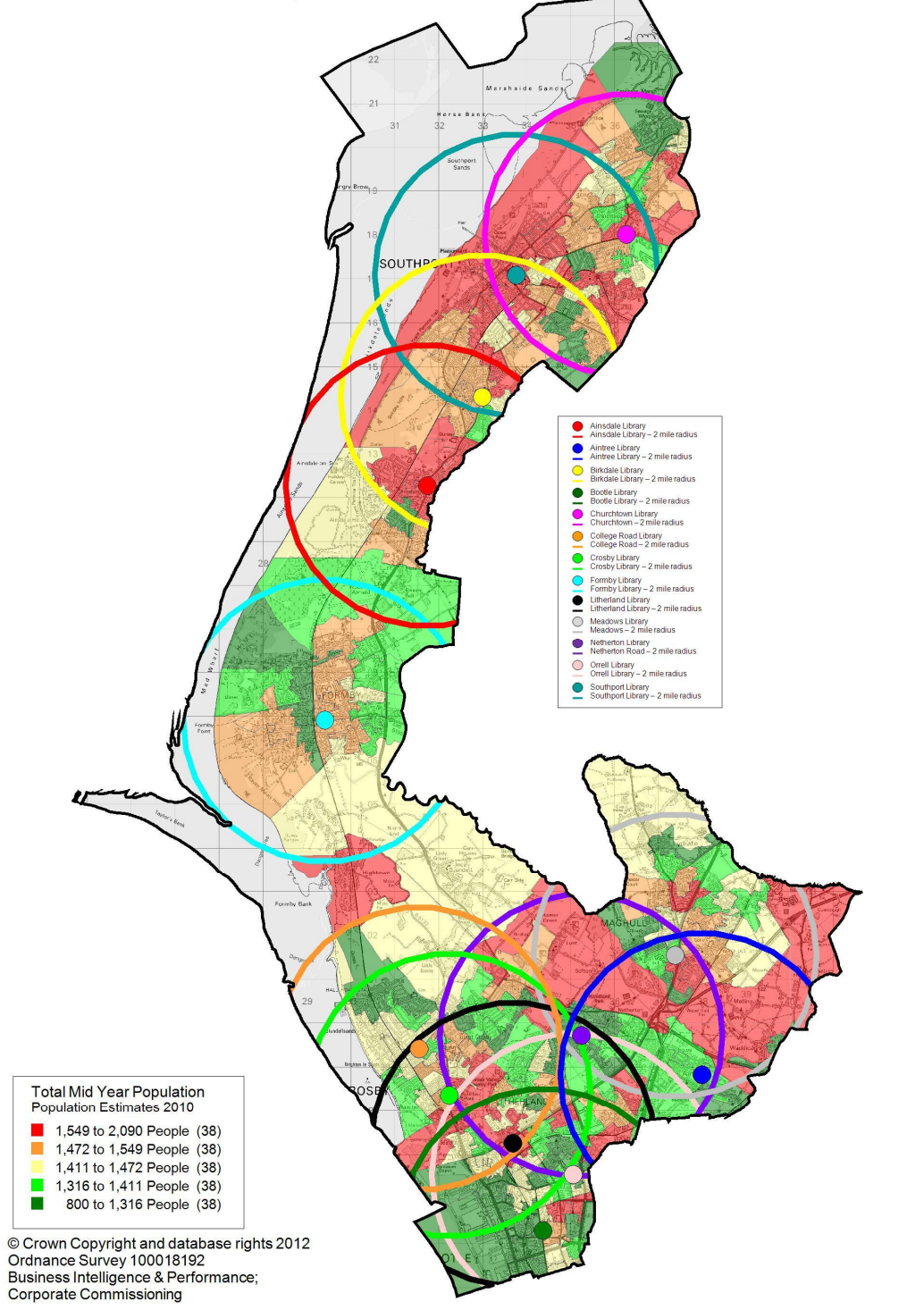
On each map there is a table indicating the ranges of numbers of population. These figures are based on the population figures for each lower super output area. There are 109 lower super output areas within Sefton.

In 2001 Public Library Standards were introduced as a framework for defining "*comprehensive and efficient*". They were last revised in April 2008 but no longer exist. The standards required library services to report on the proportion of households living within a specified distance of a static library. For Sefton the Council was required to report against 95% of households within one mile or, 100% within two miles.

Currently, 98.2% of Sefton's population are within a two mile radius of a static library. For Option B (6 libraries) 86.4% of Sefton's population would be within a two mile radius of a static library.

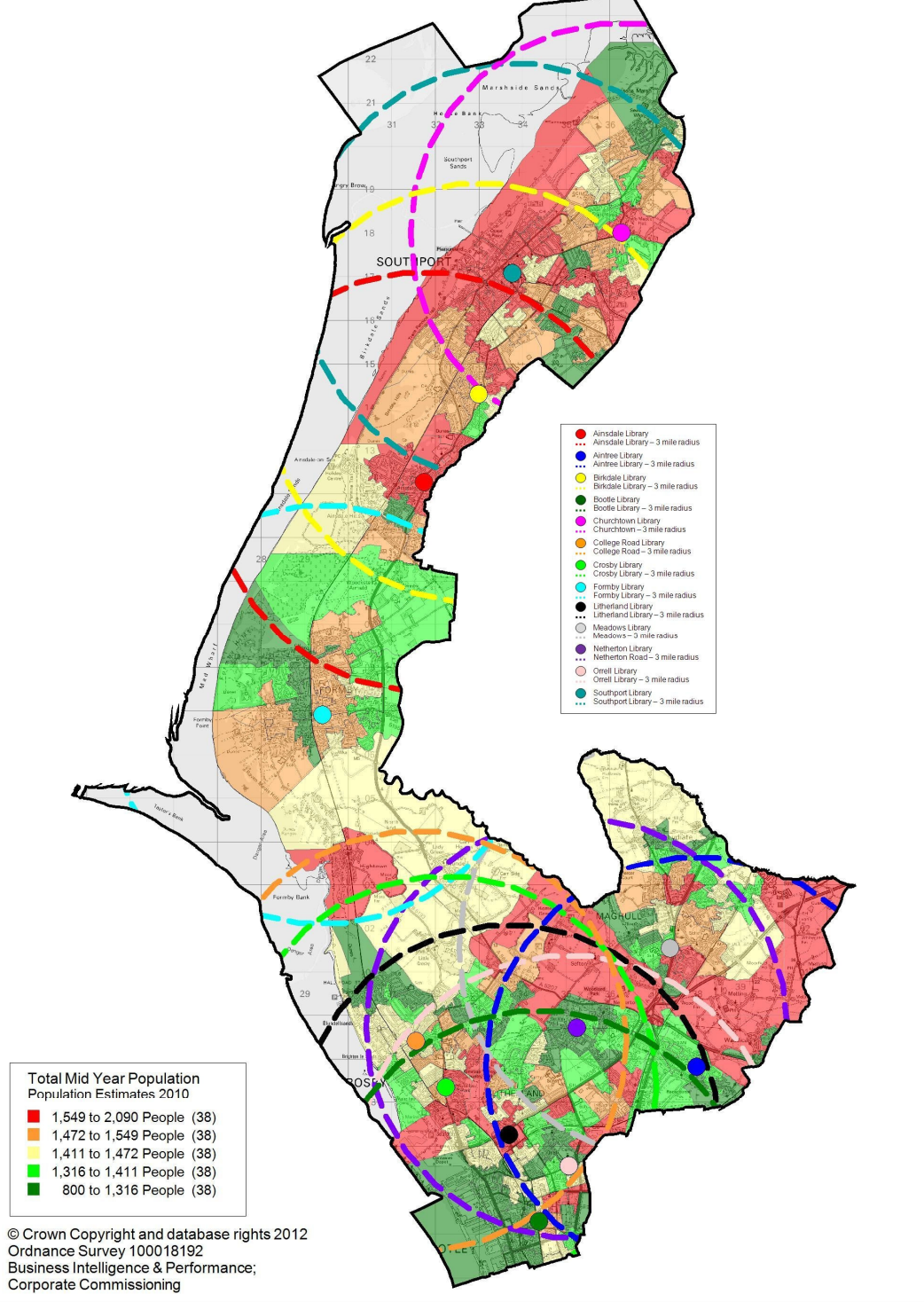
13 libraries – within 2 mile radius

Total Mid-Year Estimates 2010 Population – 2 Mile Radius

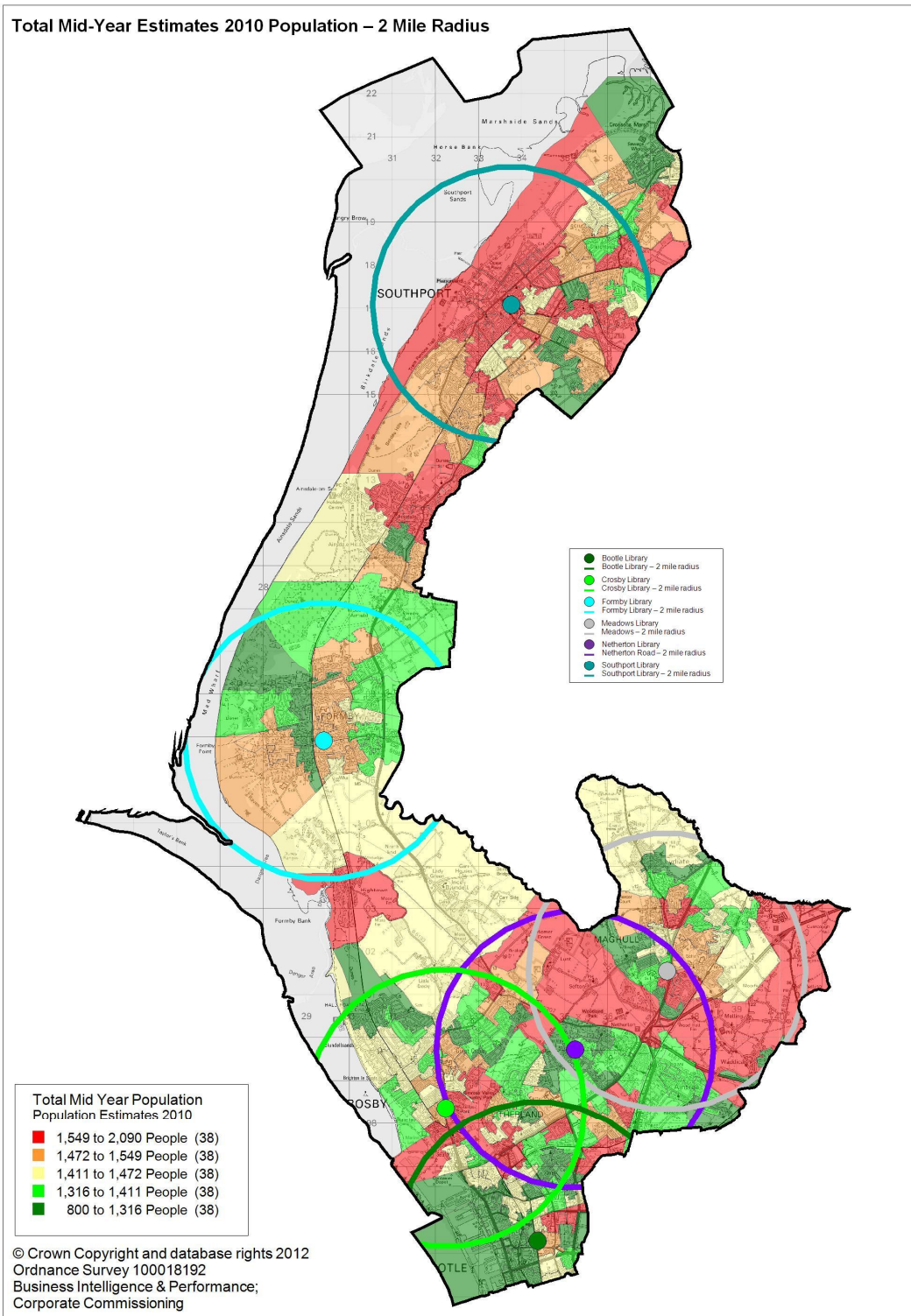


13 libraries - within 3 mile radius

Total Mid-Year Estimates 2010 Population – 3 Mile Radius



6 libraries - within 2 mile radius



6 libraries - within 3 mile radius

